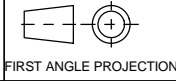


# A2 INSTALLATION DRAWING

If this document is printed in hardcopy, it is for information use only and therefore is not subject to updating controls. Always refer to viewer for latest issue.



THIS DRAWING IS CONFIDENTIAL AND IS SUPPLIED ON THE EXPRESS CONDITION THAT IT SHALL NOT BE LOANED OR COPIED OR DISCLOSED TO ANY OTHER PERSON OR USED FOR ANY OTHER PURPOSE WITHOUT THE WRITTEN CONSENT OF AP RACING LTD.

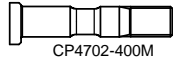
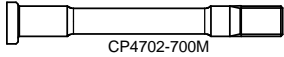
**AP RACING** © AP Racing Ltd. 2001  
 AP Racing  
 Wheler Road  
 Coventry  
 CV3 4LB

Tel: +44 024 7663 9595 e-mail: sales@ap racing.co.uk  
 Fax: +44 024 7663 9559 Web site: HTTP://www.ap racing.com

## M8 & 5/16" UNF TIGHTENING TORQUE - 22Nm (16lb/ft)

# M8 STUD MOUNTING HOLE = Ø8.020/8.005

ACTUAL SIZE



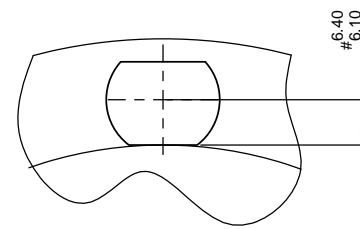
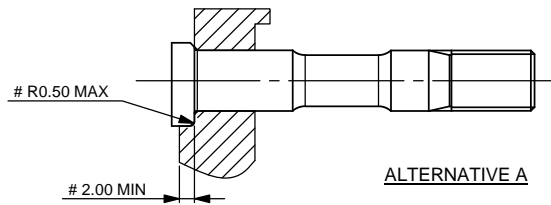
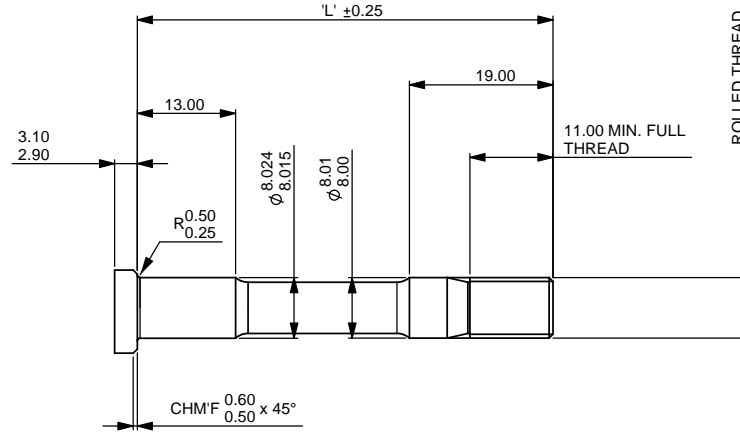
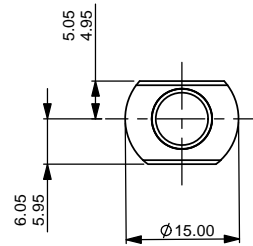
**STUD THREAD OPTIONS**  
 SUFFIX 'M' - M8x1.0x6g THREAD  
 SUFFIX 'U' - 5/16" UNF-7A THREAD

**PART No. ORDERING EXAMPLE**  
 CP4702-475MK(08) - EXAMPLE PART No.  
 CP4702 - STUD FAMILY  
 -475 - 47.5mm LONG  
 M - M8x1.0 THREAD  
 K(08) - KIT OF 8 STUDS & 8 KAYLOCK NUTS

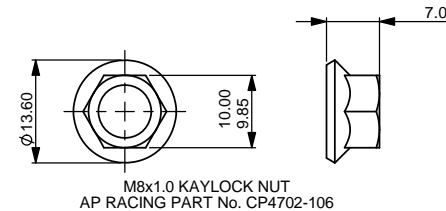
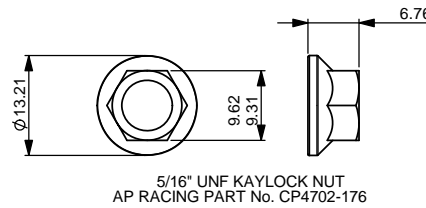
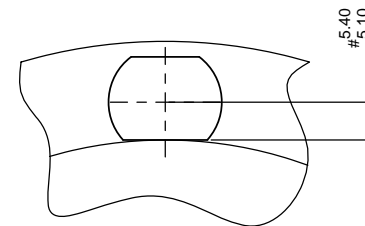
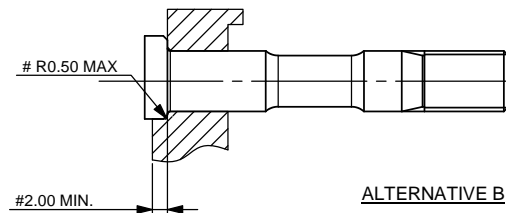
(\*\*) THE KITS LISTED BELOW ARE AVAILABLE CONTAINING 6, 8 OR 12 BOLTS ADD THE NUMBER OF BOLTS REQUIRED TO THE END OF THE PART NUMBER.

SEE ORDERING EXAMPLE ABOVE.

KIT PART No.	STUD DIM. 'L'
CP4702-400MK-(**)	40.0
CP4702-400UK-(**)	40.0
CP4702-425MK-(**)	42.5
CP4702-425UK-(**)	42.5
CP4702-450MK-(**)	45.0
CP4702-450UK-(**)	45.0
CP4702-475MK-(**)	47.5
CP4702-475UK-(**)	47.5
CP4702-500MK-(**)	50.0
CP4702-500UK-(**)	50.0
CP4702-525MK-(**)	52.5
CP4702-525UK-(**)	52.5
CP4702-550MK-(**)	55.0
CP4702-550UK-(**)	55.0
CP4702-575MK-(**)	57.5
CP4702-575UK-(**)	57.5
CP4702-600MK-(**)	60.0
CP4702-600UK-(**)	60.0
CP4702-625MK-(**)	62.5
CP4702-625UK-(**)	62.5
CP4702-650MK-(**)	65.0
CP4702-650UK-(**)	65.0
CP4702-675MK-(**)	67.5
CP4702-675UK-(**)	67.5
CP4702-700MK-(**)	70.0
CP4702-700UK-(**)	70.0
CP4702-725MK-(**)	72.5
CP4702-725UK-(**)	72.5
CP4702-750MK-(**)	75.0
CP4702-750UK-(**)	75.0
CP4702-775UK-(**)	77.5
CP4702-775MK-(**)	77.5



# - FLYWHEEL DIMENSIONS



Issue No.	Date & No.	Alterations		Zone	Initials
		Particulars			
4	02/07/01 RAC09694	REDRAWN FROM MEDUSA. 19.00 WAS 18.0 11.0 WAS 14.0 (MIN FULL THREAD). 13.0 WAS 14.0	#	RDG	JG
5	11/12/01 RAC10112	6 AND 12 BOLT OPTION AND NUMBER OF BOLTS PART NUMBER SUFFIX ADDED.	#	RDG	JG
6	20-05-02 RAC10512	-775 VERSIONS ADDED	#	RDG	JG
7	15/04/03	CP4702-176 WAS CP47023-176 CP4702-106 WAS CP4072-176	#	RDG	JG
8	18/10/04 C2551	STUD MOUNTING HOLE SIZE ADDED.	#	RDG	JG
9	12/09/08 C3477	M8 & 5/16" UNF TIGHTENING TORQUE NOTE ADDED.	#	RDG	JG
10	07/02/13	M8 KAYLOCK NUT DETAIL; AF DIM. 10.00 / 9.85 WAS 7.00	#	RDG	JG

SCALE 2:1	SHEET 1 OF 1
DRAWN RICHARD GOSTICK	APPROVED
DERIVED FROM CP4702-10CD.SHE	TITLE CLUTCH STUD INSTALLATION DRAWING
DRG No. cp4702-10cd	