

A1 INSTALLATION DRAWING

IF THIS DOCUMENT IS PRINTED IN HARDCOPY, IT IS FOR INFORMATION USE ONLY AND THEREFORE IS NOT SUBJECT TO UPDATING CONTROLS. ALWAYS REFER TO SOLIDWORKS VIEWER FOR LATEST ISSUE



THIS DRAWING IS CONFIDENTIAL AND IS SUPPLIED ON THE EXPRESS CONDITION THAT IT SHALL NOT BE LOANED OR COPIED OR DISCLOSED TO ANY OTHER PERSON OR USED FOR ANY OTHER PURPOSE WITHOUT THE WRITTEN CONSENT OF AP RACING LTD.



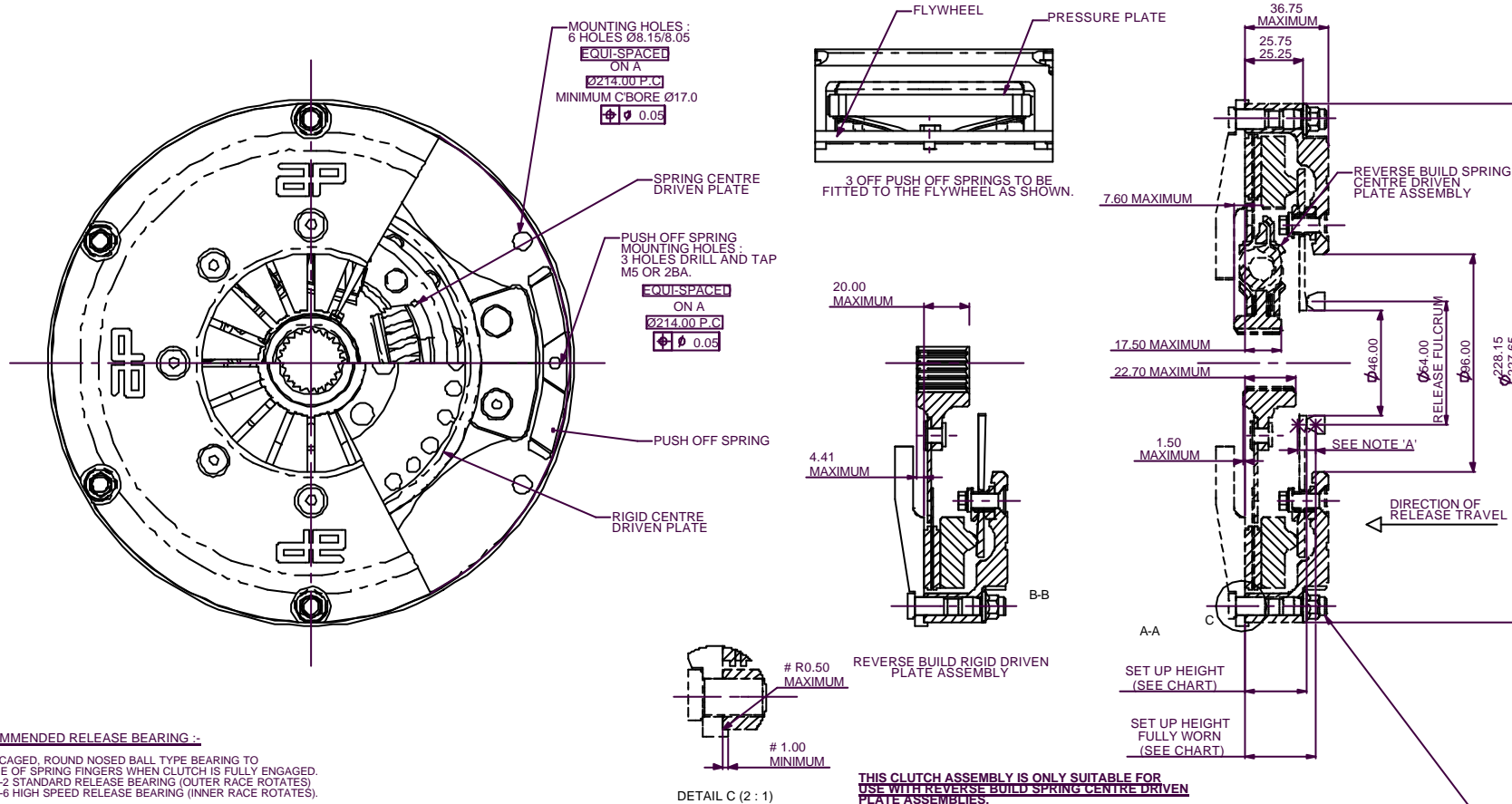
© AP Racing Ltd. 2004

AP Racing
Wheler Road
Coventry
CV3 4LB

Tel: +44 (0) 24 7683 8995
Fax: +44 (0) 24 7683 9569

e-mail: engineering@apracings.co.uk
Web site: <http://www.apracing.com>

Issue No.	Alterations		Zone	Track
	Date & No.	Particulars		
6	07/01/04 C2364	REDRAWN IN SOLIDWORKS. PUSH OFF SPRING LOCATION DETAIL ADDED.		



RECOMMENDED RELEASE BEARING :-

STEEL CAGED, ROUND NOSED BALL TYPE BEARING TO BE FREE OF SPRING FINGERS WHEN CLUTCH IS FULLY ENGAGED.
CP3457-2 STANDARD RELEASE BEARING (OUTER RACE ROTATES)
CP3457-6 HIGH SPEED RELEASE BEARING (INNER RACE ROTATES).

SUGGESTED FLYWHEEL MATERIAL :-

0.35/0.45% CARBON STEEL, BRINELL 200 MIN. OR SUITABLE MATERIAL FOR HIGH RPM.
FRICTION FACE TO BE FINE TURNED AND GROUND SMOOTH AND FLAT. RUNOUT AT R77.2 <=0.08 MAX. WHEN ASSEMBLED TO CRANKSHAFT.

TORQUE CAPACITY :-

FOR APPLICATIONS EXCEEDING THE MAXIMUM RECOMMENDED FIGURES PLEASE CONTACT A.P. RACING.

CLUTCH WEAR IN:

THIS CLUTCH HAS BEEN DESIGNED TO ACHIEVE 0.75mm WEAR IN MINIMUM.
DRIVEN PLATE THICKNESS NEW: 7.08 NOM
DRIVEN PLATE THICKNESS WORN: 6.29 MIN

NOTE:

THIS CLUTCH ASSEMBLY INCORPORATES A STEEL MAIN PRESSURE PLATE FOR APPLICATIONS WHERE CLUTCH ROTATIONAL SPEED EXCEEDS 8000 r.p.m.

THIS CLUTCH ASSEMBLY IS ONLY SUITABLE FOR USE WITH REVERSE BUILD SPRING CENTRE DRIVEN PLATE ASSEMBLIES.

DRIVEN PLATES WITH OTHER HUB LENGTHS AND SPLINE TYPES ARE AVAILABLE.

NOTE A : RELEASE TRAVEL TO BE LIMITED TO 5.50 MAXIMUM BY MEANS OF AN EXTERNAL STOP.

FLYWHEEL DIMENSIONS

DRIVEN PLATES						
SPLINE SIZE	3 PADDLE PLATE CP5213 TYPE	4 PADDLE PLATE CP5214 TYPE	6 PADDLE PLATE CP5216 TYPE	3 PADDLE S/CENTRE TYPE	4 PADDLE S/CENTRE TYPE	6 PADDLE S/CENTRE TYPE
1.00" x 23	N/A	CP5214-12	CP5216-15	N/A	CP4814-21	CP4816-13
7/8" x 20	N/A	CP514-14	CP5216-14	N/A	CP4814-15	CP4816-12
29 x 10	N/A	N/A	N/A	N/A	N/A	CP4816-11

CLUTCH ASSEMBLY PART No.	SET UP HEIGHT		RECOMMENDED MAX. DYNAMIC TORQUE CAPACITY Nm (lb/ft)	RELEASE LOAD (daN) MAX. PEAK WORN
	NEW	MAX. WORN (0.75 WEAR-IN)		
CP3745ACRV	28.23 26.95	30.71 (0.75 WEAR-IN)	343 (253)	347
CP3745AGRY	28.36 27.07	30.85 (0.75 WEAR-IN)	301 (222)	289

ASSEMBLY INERTIA			
DRIVEN PLATE TYPE	COMPLETE ASSY. WEIGHT INC. D/P'S. (kg)	COMPLETE ASSY. INERTIA INC. D/P'S. (kgm²)	D/P AND HUB INERTIA. (kgm²)
4 PADDLE CERAMAEETALIC	3.9000	0.0253	0.0033
4 PADDLE S/CENTRE	4.3200	0.0262	0.0042
6 PADDLE CERAMAEETALIC	4.0440	0.0264	0.0044
6 PADDLE S/CENTRE	4.5300	0.0320	0.0995

SCALE 1:1	SHEET 1 OF 1
DRAWN	Jeremy Govan
APPROVED	
DERIVED FROM	cp3745-1cd.she
TITLE	
Ø200mm CLUTCH INSTALLATION	
DRG NO.	cp3745-1cd