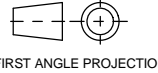


A2 INSTALLATION DRAWING

If this document is printed in hardcopy, it is for information use only and therefore is not subject to updating controls. Always refer to viewer for latest issue.



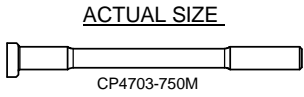
THIS DRAWING IS CONFIDENTIAL AND IS SUPPLIED ON THE EXPRESS CONDITION THAT IT SHALL NOT BE LOANED OR COPIED OR DISCLOSED TO ANY OTHER PERSON OR USED FOR ANY OTHER PURPOSE WITHOUT THE WRITTEN CONSENT OF AP RACING LTD.

AP RACING © AP Racing Ltd. 2000
 AP Racing
 Wheler Road
 Coventry
 CV3 4LB

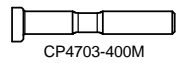
Tel: +44 024 7663 9595 e-mail: sales@ap racing.co.uk
 Fax: +44 024 7663 9559 Web site: HTTP://www.ap racing.com

M6 & 1/4" UNF TIGHTENING TORQUE - 10Nm (7.5lb/ft)

Issue No.	Date & No.	Alterations		Zone	Initials
		Particulars			
1	26/10/99 C1626	FIRST ISSUE			
2	29/08/00 RAC08986	1/4" UNF STUDS ADDED.			RDG
3	10/01/01 RAC09290	Ø'B' - Ø6.016/6.008 WAS 6.01/6.00 Ø6.365/6.357 WAS 6.36/6.35 F/W MOUNTING INFO ADDED		A3 D3 F1	GS
4	11/12/01 RAC10112	'(10)' ADDED TO PART NUMBER SUFFIX.			JG
5	12/09/08 C3477	M6 & 1/4" UNF TIGHTENING TORQUE NOTE ADDED.		H6 H9	KJC
6A	26/09/19 C5395	CP4703-800 UK10 ADDED			CGT



STUD THREAD OPTIONS
 SUFFIX 'M' - M6x1.0x6g THREAD
 SUFFIX 'U' - 1/4" UNF THREAD

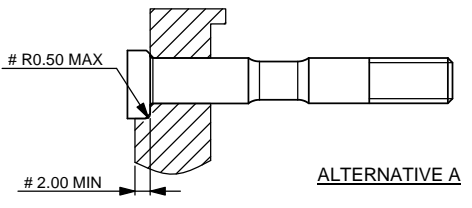
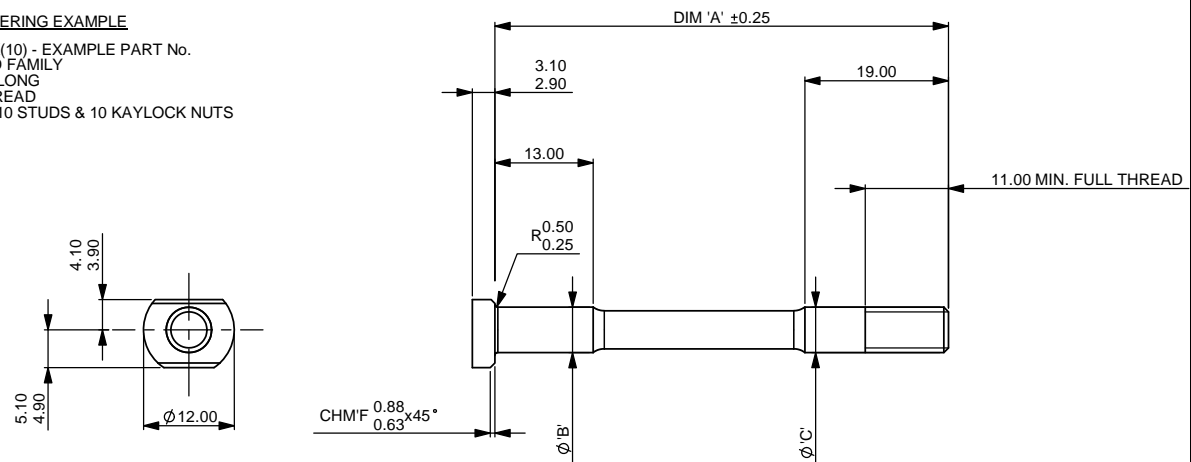


PART No. ORDERING EXAMPLE
 CP4703-475MK(10) - EXAMPLE PART No.
 CP4703 - STUD FAMILY
 -475 - 47.5mm LONG
 M - M6x1.0 THREAD
 K(10) - KIT OF 10 STUDS & 10 KAYLOCK NUTS

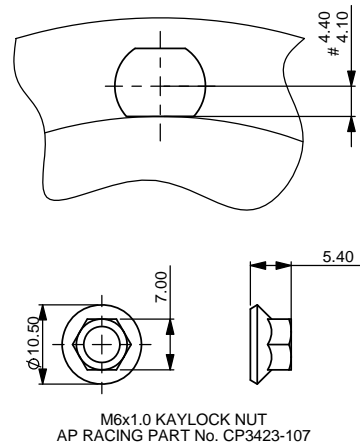
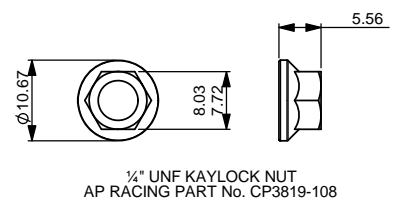
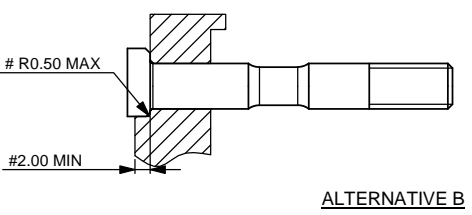
FLYWHEEL MOUNTING HOLE INFORMATION

FOR M6 x 1.0 STUD MOUNTING HOLE - Ø6.012/6.000
 FOR 1/4" UNF STUD MOUNTING HOLE - Ø6.362/6.350

Kit Part No	STUD DIM 'A'	DIA. 'B'	DIA. 'C'
CP4703-400MK(10)	40.00	6.016/6.008	5.98/5.95
CP4703-425MK(10)	42.50	6.016/6.008	5.98/5.95
CP4703-450MK(10)	45.00	6.016/6.008	5.98/5.95
CP4703-475MK(10)	47.50	6.016/6.008	5.98/5.95
CP4703-500MK(10)	50.00	6.016/6.008	5.98/5.95
CP4703-525MK(10)	52.50	6.016/6.008	5.98/5.95
CP4703-550MK(10)	55.00	6.016/6.008	5.98/5.95
CP4703-575MK(10)	57.50	6.016/6.008	5.98/5.95
CP4703-600MK(10)	60.00	6.016/6.008	5.98/5.95
CP4703-625MK(10)	62.50	6.016/6.008	5.98/5.95
CP4703-650MK(10)	65.00	6.016/6.008	5.98/5.95
CP4703-675MK(10)	67.50	6.016/6.008	5.98/5.95
CP4703-700MK(10)	70.00	6.016/6.008	5.98/5.95
CP4703-725MK(10)	72.50	6.016/6.008	5.98/5.95
CP4703-750MK(10)	75.00	6.016/6.008	5.98/5.95
CP4703-400UK(10)	40.00	6.365/6.357	6.33/6.30
CP4703-425UK(10)	42.50	6.365/6.357	6.33/6.30
CP4703-450UK(10)	45.00	6.365/6.357	6.33/6.30
CP4703-475UK(10)	47.50	6.365/6.357	6.33/6.30
CP4703-500UK(10)	50.00	6.365/6.357	6.33/6.30
CP4703-525UK(10)	52.50	6.365/6.357	6.33/6.30
CP4703-550UK(10)	55.00	6.365/6.357	6.33/6.30
CP4703-575UK(10)	57.50	6.365/6.357	6.33/6.30
CP4703-600UK(10)	60.00	6.365/6.357	6.33/6.30
CP4703-625UK(10)	62.50	6.365/6.357	6.33/6.30
CP4703-650UK(10)	65.00	6.365/6.357	6.33/6.30
CP4703-675UK(10)	67.50	6.365/6.357	6.33/6.30
CP4703-700UK(10)	70.00	6.365/6.357	6.33/6.30
CP4703-725UK(10)	72.50	6.365/6.357	6.33/6.30
CP4703-750UK(10)	75.00	6.365/6.357	6.33/6.30
CP4703-800UK(10)	80.00	6.365/6.357	6.33/6.30



- FLYWHEEL DIMENSIONS



SCALE 2:1	SHEET 1 OF 1
DRAWN RICHARD GOSTICK	
APPROVED	
DERIVED FROM	
TITLE CLUTCH STUD INSTALLATION DRAWING	
DRG No.	cp4703-1cd