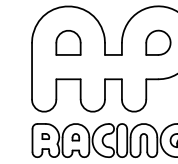


A3 INSTALLATION DRAWING

If this document is printed in hardcopy, it is for information only and therefore is not subject to updating controls. Always refer to viewer for latest issue

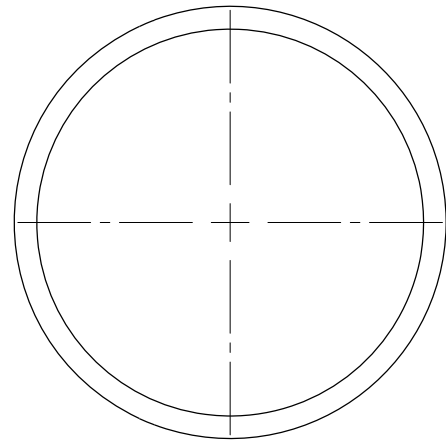


THIS DRAWING IS CONFIDENTIAL AND IS SUPPLIED ON THE EXPRESS CONDITION THAT IT SHALL NOT BE LOANED OR COPIED OR DISCLOSED TO ANY OTHER PERSON OR USED FOR ANY OTHER PURPOSE WITHOUT THE WRITTEN CONSENT OF AP RACING LTD.

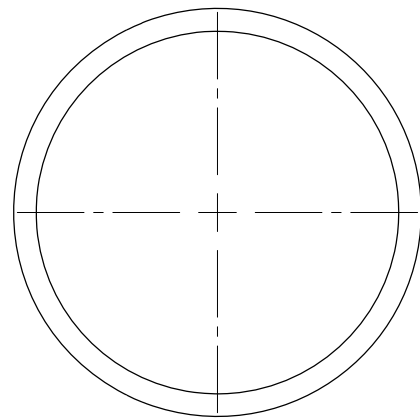


AP Racing
 Wheeler Road
 Coventry
 CV3 4LB
 Tel: +44 024 7663 9595
 Fax: +44 024 7663 9559
 e-mail: engineering@apracings.co.uk
 web-site: HTTP://www.apracings.com

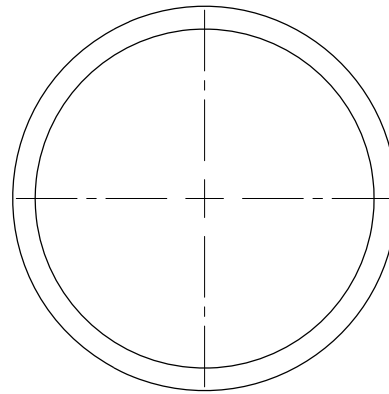
Issue No.	Date & No.	Alterations		Zone	Initials
		Particulars			
1	18/03/14 B7044	FIRST ISSUE			SAT
2	23/04/14 B7044	DRAWING FRAME UPDATED			NJS



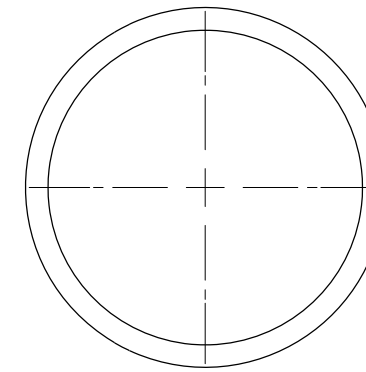
CP4900-280
 1 BLUE STRIPE
 BORE N - 2.00"



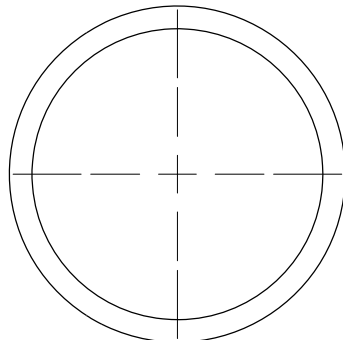
CP4900-281
 2 BLUE STRIPE
 BORE M - 1.87"



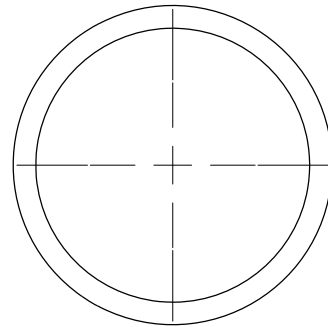
CP4900-282
 3 BLUE STRIPE
 BORE L - 1.75"



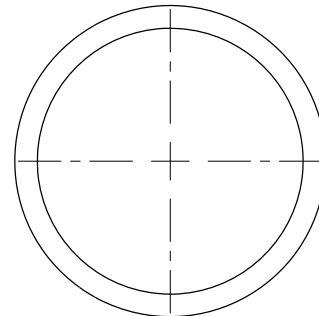
CP4900-283
 1 BLUE STRIPE
 BORE K - 1.62"



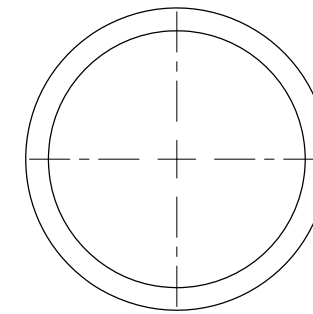
CP4900-284
 2 BLUE STRIPE
 BORE J - 1.50"



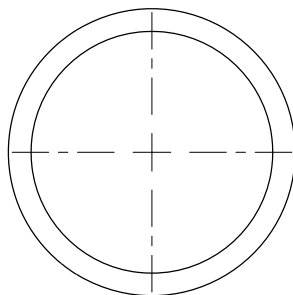
CP4900-285
 3 BLUE STRIPE
 BORE H - 36mm



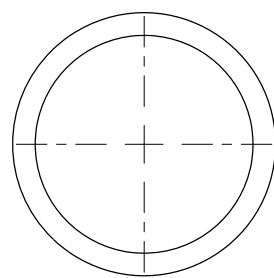
CP4900-286
 1 BLUE STRIPE
 BORE G - 1.37"



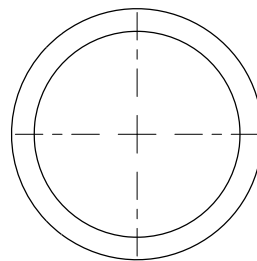
CP4900-287
 2 BLUE STRIPE
 BORE F - 34mm



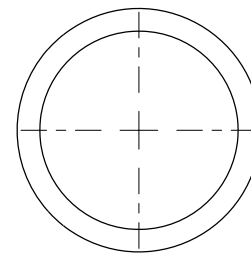
CP4900-288
 3 BLUE STRIPE
 BORE E - 1.25"



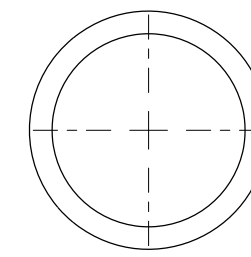
CP4900-289
 1 BLUE STRIPE
 BORE D - 1.12"



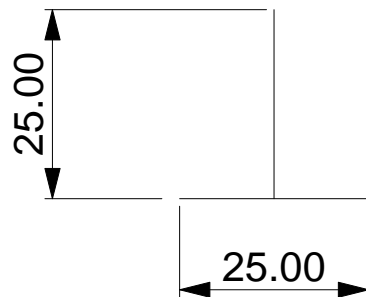
CP4900-290
 2 BLUE STRIPE
 BORE C - 1.06"



CP4900-291
 3 BLUE STRIPE
 BORE B - 26mm



CP4900-292
 1 BLUE STRIPE
 BORE A - 1.00"



ALL VIEWS ARE 1:1 PRINT 100% SCALE TO CHECK SEALS AGAINST DRAWING

SCALE 1:1		SHEET 1 OF 1	
DRAWN	Steve Thomas		
APPROVED	#		
DERIVED FROM			
TITLE			
SQUARE SECTION SEAL			
VERY HIGH TEMP. SPEC SEAL IN BORE			
Drg No.	CP4900-18CD		