

A1 INSTALLATION DRAWING

IF THIS DOCUMENT IS PRINTED IN HARDCOPY, IT IS FOR INFORMATION USE ONLY AND THEREFORE IS NOT SUBJECT TO UPDATING CONTROLS. ALWAYS REFER TO SOLIDWORKS VIEWER FOR LATEST ISSUE



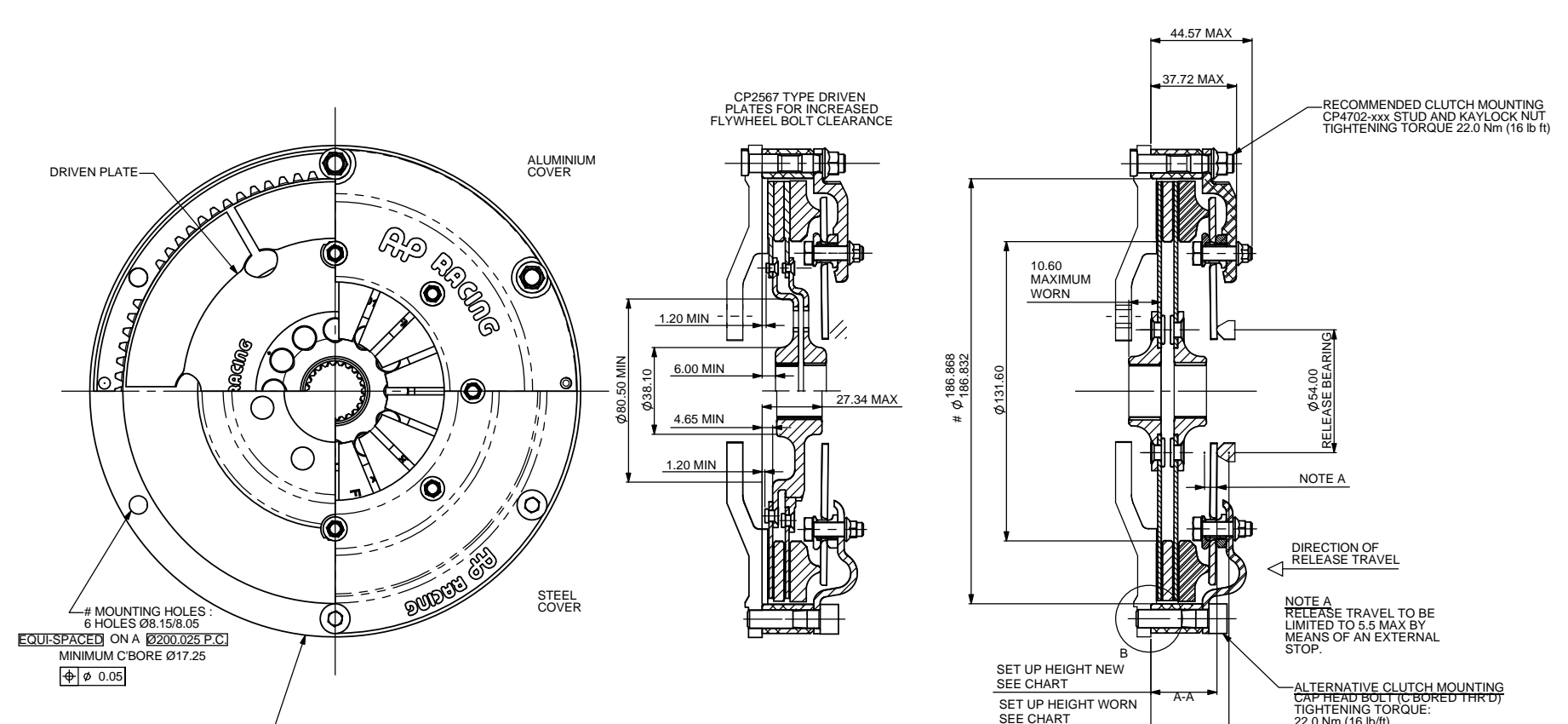
THIS DRAWING IS CONFIDENTIAL AND IS SUPPLIED ON THE EXPRESS CONDITION THAT IT SHALL NOT BE LOANED OR COPIED OR DISCLOSED TO ANY OTHER PERSON OR USED FOR ANY OTHER PURPOSE WITHOUT THE WRITTEN CONSENT OF AP RACING LTD.



AP Racing
Wheler Road
Coventry
CV3 4LB

Tel: +44 (0) 24 7663 9595
Fax: +44 (0) 24 7663 9559
e-mail: engineering@apracings.co.uk
Web site: http://www.apracings.com

© AP Racing Ltd. 2013



SPLINE SIZE	BACK TO BACK TYPE		GEAR DRIVE (OUTER D.P CP2822-31)	"COSWORTH" TYPE	
	OUTER D/P.	INNER D/P.		FLYWHEEL SIDE	P/PLATE SIDE
1.00" x 23	CP2012-165FM3	CP2012-178FM3	CP3822-10FM3	CP2567-23FM3	CP2567-24FM3
7/8" x 20	CP2012-166FM3	CP2012-179FM3	CP3822-11FM3	CP2567-7FM3	CP2567-8FM3
29 x 10	CP2012-199FM3	CP2012-245FM3	-	-	-
1"5/32x26	CP2012-171FM3	CP2012-173FM3	-	CP2567-11FM3	CP2567-12FM3
1"1/8x10	CP2012-117FM3	CP2012-169FM3	-	CP2567-15FM3	CP2567-16FM3

CLUTCH ASSEMBLY PART No.	COVER TYPE	SET UP HEIGHT		RECOMMENDED MAX. DYNAMIC TORQUE CAPACITY Nm (lb/ft)	RELEASE LOAD (N) MAX. PEAK NEW	RELEASE LOAD (N) MAX. PEAK WORN
		NEW	MAX. WORN			
CP2125ACRV	ALUMINIUM	30.59	33.10	848 (625)	3500	4400
CP2125CRV	STEEL	27.97	33.10	848 (625)	3500	4400
CP2125AORA	ALUMINIUM	30.92	33.44	532 (392)	2400	3300
CP2125ORA	STEEL	28.01	33.44	532 (392)	2400	3300
CP2125AGRN	ALUMINIUM	29.97	32.48	327 (241)	1600	2200
CP2125GRN	STEEL	27.07	32.48	327 (241)	1600	2200
CP2125AGRY	ALUMINIUM	30.62	33.14	568 (418)	3000	3900
CP2125GRY	STEEL	27.91	33.14	568 (418)	3000	3900

ASSMBLY INERTIA			
CLUTCH TYPE	COMPLETE ASSY. WEIGHT INC. D/P'S.	COMPLETE ASSY. INERTIA INC. D/P'S.	D/P AND HUB INERTIA
3 PADDLE			
STEEL COVER	4.15 kg	0.025 kgm ²	0.0037 kgm ²
ALUMINIUM COVER	3.85 kg	0.023 kgm ²	
4 PADDLE			
STEEL COVER	4.70 kg	0.026 kgm ²	0.0040 kgm ²
ALUMINIUM COVER	4.40 kg	0.024 kgm ²	
6 PADDLE			
STEEL COVER	4.22 kg	0.025 kgm ²	0.0038 kgm ²
ALUMINIUM COVER	3.92 kg	0.023 kgm ²	

Issue No.	Date & No.	Alterations		Zone	Initials
		Particulars	#		
5	01/02/10 C3789	REDRAWN IN SOLIDWORKS. CRV ASSEMBLY: RELEASE LOAD - MAX PEAK WORN 4400N WAS 347daN TORQUE CAPACITY: 848Nm WAS 765Nm ORA ASSEMBLY: RELEASE LOAD - MAX PEAK WORN 3300N WAS 222daN TORQUE CAPACITY: 532Nm WAS 505Nm GRN ASSEMBLY: RELEASE LOAD - MAX PEAK WORN 2200N WAS 154daN TORQUE CAPACITY: 327Nm WAS 350Nm ALL REFS: MAX PEAK NEW RELEASE LOAD ADDED.		JG	
6	15/06/15 C4165	CP2125 GRY SPEC ADDED. SUH CHANGES: GRV: 30.59/27.69 WAS 31.31/28.64 33.10 WAS 33.80 ORA: 30.92/28.01 WAS 31.59/28.91 33.44 WAS 34.07 GRN: 29.97/27.07 WAS 32.66/30.03 32.48 WAS 35.14		JG	

SCALE 1:1	SHEET 1 OF 1
DRAWN	Alex Bennitt
APPROVED	
DERIVED FROM	CP2125-1 (MEDUSA)
TITLE	Ø7.25" (Ø184.00mm) TWIN PLATE CLUTCH ASSEMBLY
DRG NO.	CP2125-1CD