

# A1 INSTALLATION DRAWING

IF THIS DOCUMENT IS PRINTED IN HARD COPY, IT IS FOR INFORMATION USE ONLY AND THEREFORE IS NOT SUBJECT TO UPDATING CONTROLS. ALWAYS REFER TO SOLIDWORKS VIEWER FOR LATEST ISSUE



THIS DRAWING IS CONFIDENTIAL AND IS SUPPLIED ON THE EXPRESS CONDITION THAT IT SHALL NOT BE LOANED OR COPIED OR DISCLOSED TO ANY OTHER PERSON OR USED FOR ANY OTHER PURPOSE WITHOUT THE WRITTEN CONSENT OF AP RACING LTD.

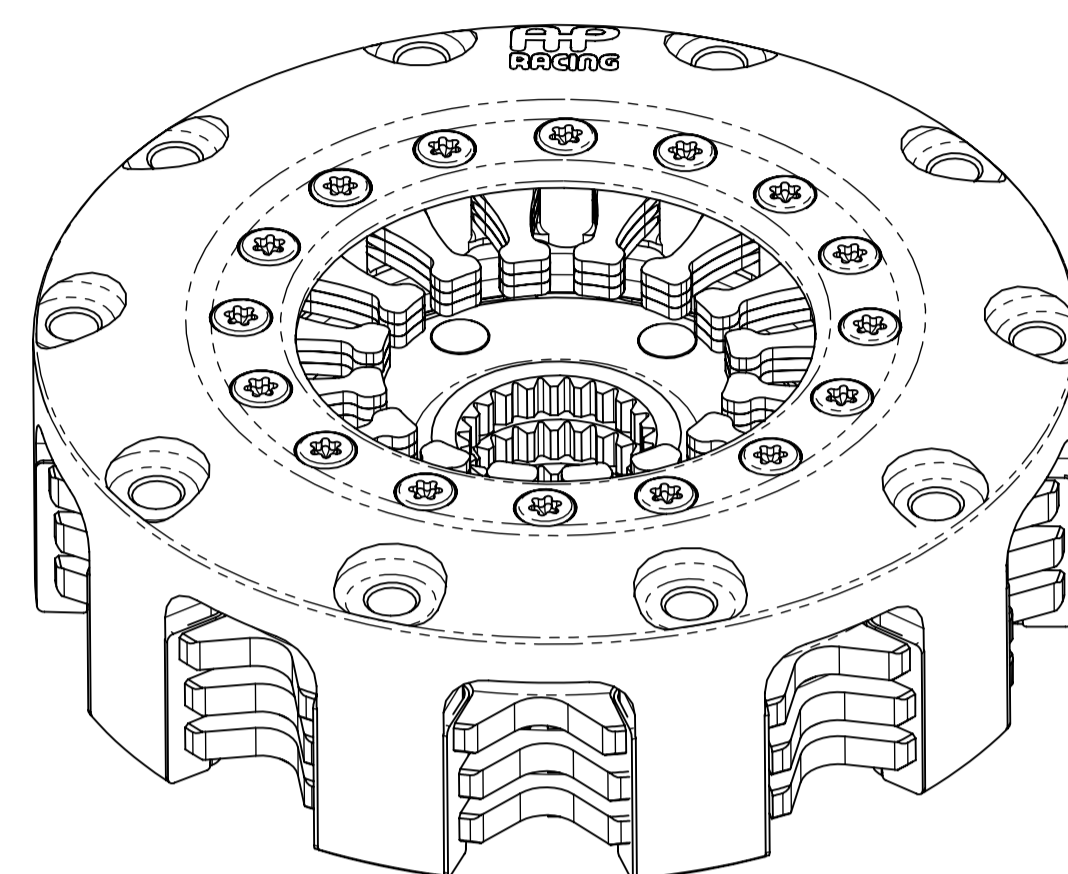


© AP Racing Ltd. 2004

AP Racing  
Wheler Road  
Coventry  
CV3 4LB

Tel: +44 (0) 24 7663 9595  
Fax: +44 (0) 24 7663 9559  
e-mail: engineering@ap racing.co.uk  
Web site: http://www.ap racing.com

CP6073 - 115mm (4.5") SINTERED CLUTCH ASSEMBLY



CP6073 CLUTCH FAMILY					
MAXIMUM DYNAMIC TORQUE CAPACITY					
(Nm)	878	761	664	499	
(ft.lb)	647	561	490	386	
<b>RELEASE LOAD</b>					
Max. Peak Worn (N)	5500	5500	4700	3670	
At Travel (N)	4000	4000	3400	2670	
<b>WEAR IN (See Note)</b>					
	0.75	0.75	0.75	0.75	
Set Up Height New	33.52	33.69	33.39	31.87	
Set Up Height Worn - MAX	36.08	36.25	35.93	34.50	
Release Ratio	3.906	3.442	3.442	3.442	
Estimated Assembly Mass (Inc. Hub with Steel Main Pressure Plate) = 2.30 Kg					
Estimated Assembly Inertia (Inc. Hub with Steel Main Pressure Plate) = 0.0055 Kgm <sup>2</sup>					
Estimated Driven Plate and Hub Inertia = 0.001 Kgm <sup>2</sup>					

Issue No.	Date & No.	Alterations		Zone	Initials
		Particulars			
1	11/08/04 C2493	FIRST ISSUE OF RE-DRAW OF CP6074-1CD, INC. NEW PART NUMBERING SYSTEM.		#	#
2	08/10/04	WEIGHT WAS 2.78 ASSY. INERTIA WAS 0.0065 DP. INERTIA WAS 0.0013		#	JG
3	11/10/04 C2543	CP6074-22FM4 AND 023FM4 ADDED TO DP TABLE.		#	JG
4	27/10/04	SUH CORRECTED BY REMMOVING 2.5 FROM ALL FIGURES		#	JG
5	10/01/06	DRIVEN PLATE INERTIA WAS 0.00010 Kgm <sup>2</sup>		#	JG
6	23/07/19	PICTORIAL UPDATE TO DRIVE PLATES		#	BJP

PERFORMANCE SUFFIX	DS	DE	SE	CE*
For Reference				
Diaphragm Spring Rate	GLD	GLD	SLV	CRV
Clutch Ratio	SHR	EHR	EHR	EHR

\* TWIN DIAPHRAGM SPRING.

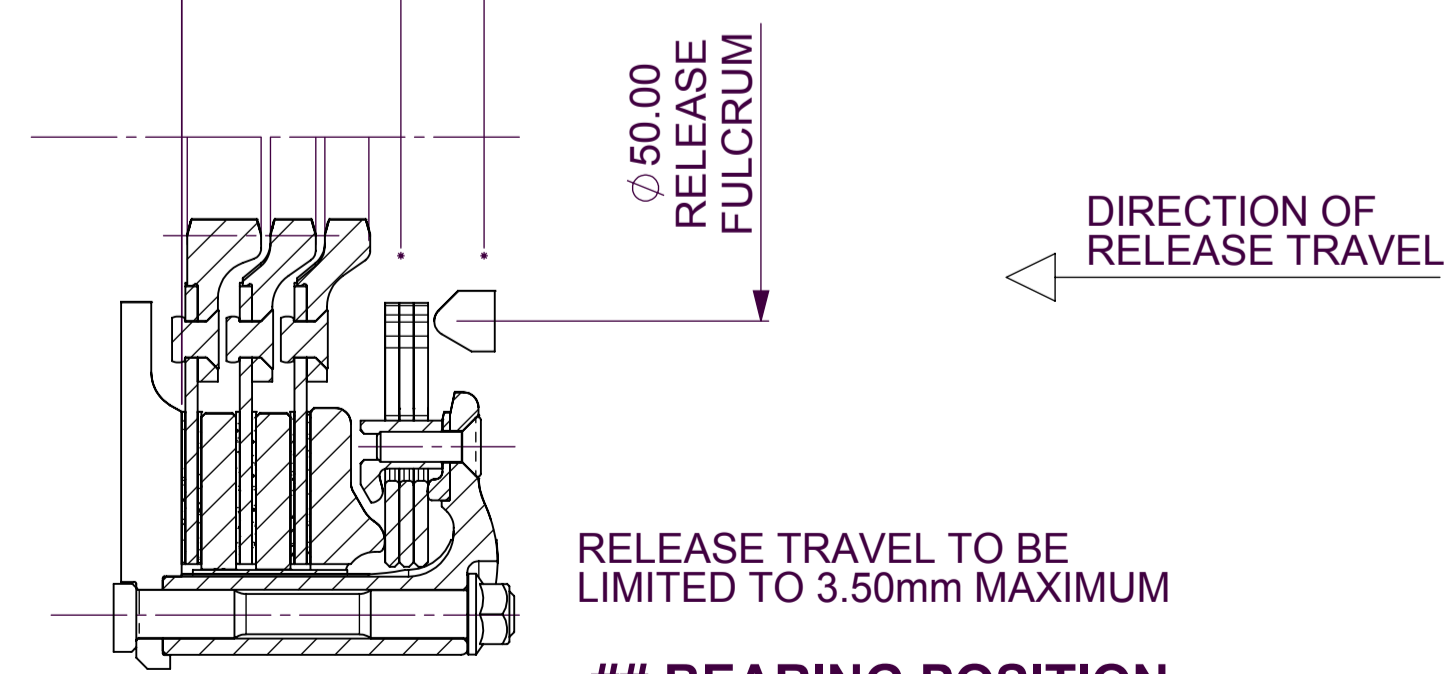
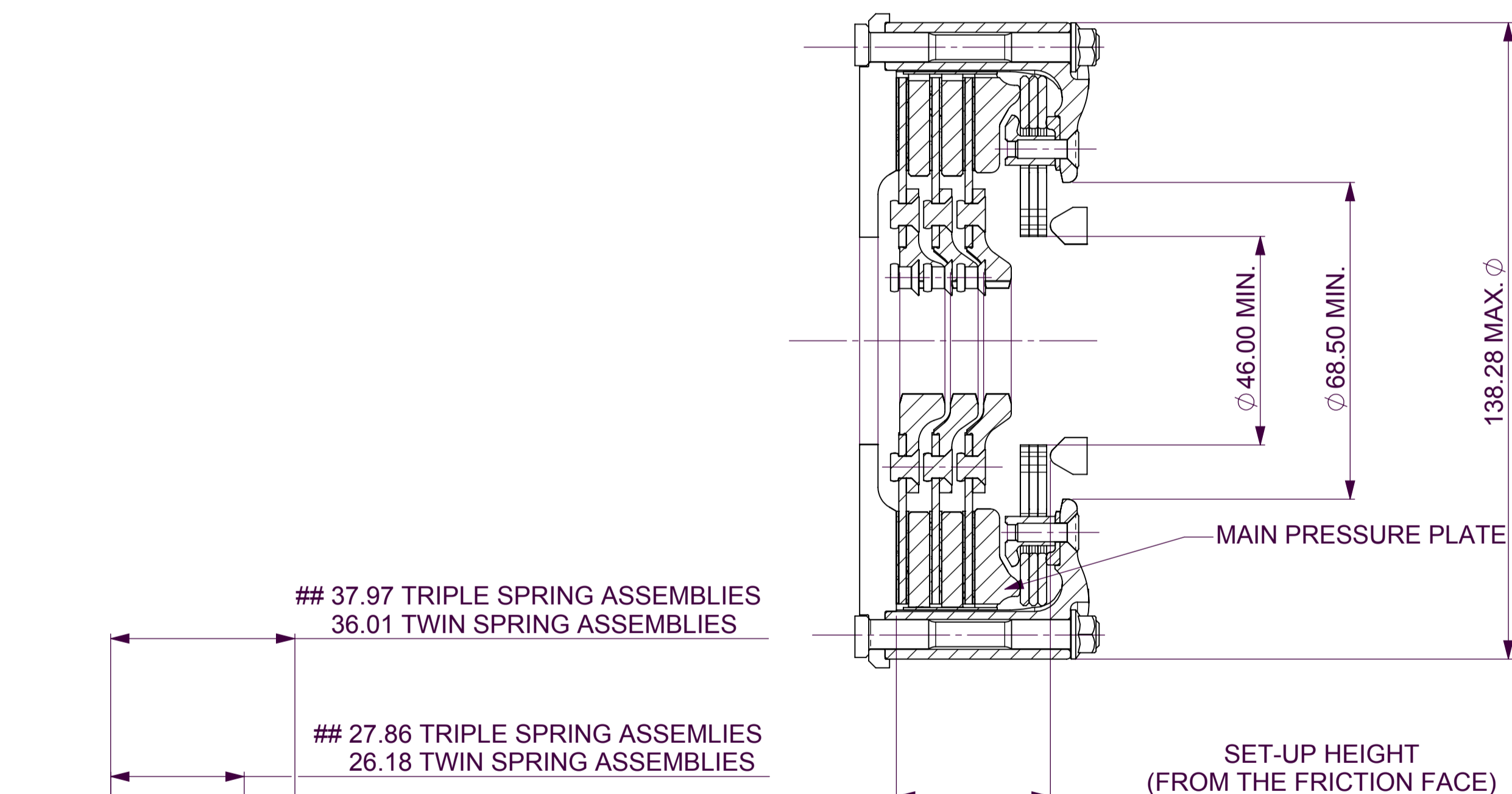
MATERIAL	SUFFIX	DRIVE PLATE MATERIAL	DRIVE PLATE THICKNESS
90		SINTERED	2.63mm

FLYWHEEL TYPE		
	SUFFIX	COMMENTS
FLAT FLYWHEEL	FF	N/A
STEPPED FLYWHEEL	SF	FOR INSTALLATION DATA SEE SHEET 2

Sample AP Racing Part No. **CP6073-DS90-SF**

WEAR IN	
THIS CLUTCH HAS BEEN DESIGNED FOR THE WEAR IN INDICATED ABOVE,	
DRIVEN PLATE THICKNESS NEW:	2.63mm MIN
DRIVEN PLATE THICKNESS WORN:	2.34mm MIN

DRIVEN PLATES AVAILABLE WITH THE FOLLOWING SPLINE SIZES			
SPLINE	PART No. STANDARD LENGTH (x 3)	PART No. INCREASED LENGTH (x 1)	PART No. INCREASED LENGTH (x 2)
1"X23T	CP5004-5FM4	CP6074-23FM4	CP6074-22FM4
7/8" x 20T	CP5004-6FM4		
1 5/32" x 26T	CP5004-8FM4	CP6074-19FM4	CP6074-18FM4
29.0 x10T	CP5004-7FM4		



**## BEARING POSITION**  
TO ENSURE ADEQUATE RELEASE TRAVEL AND CLUTCH LIFE THESE LIMITS HAVE BEEN CALCULATED USING AN ADDITIONAL 20% RELEASE TRAVEL AND 50% MORE WEAR IN THAN SPECIFIED.  
THESE FIGURES COVER THE FULL RANGE OF CLUTCHES IN THE CP6073 FAMILY.

SCALE 1:1 SHEET 1 OF 2

DRAWN Jeremy Govan

APPROVED

DERIVED FROM cp6073-1cd (medusa)

TITLE  
4,5" (115mm) 3-PLATE SINTERED CLUTCH INSTALLATION DRAWING.

DRG NO. cp6073cd



# A1 INSTALLATION DRAWING

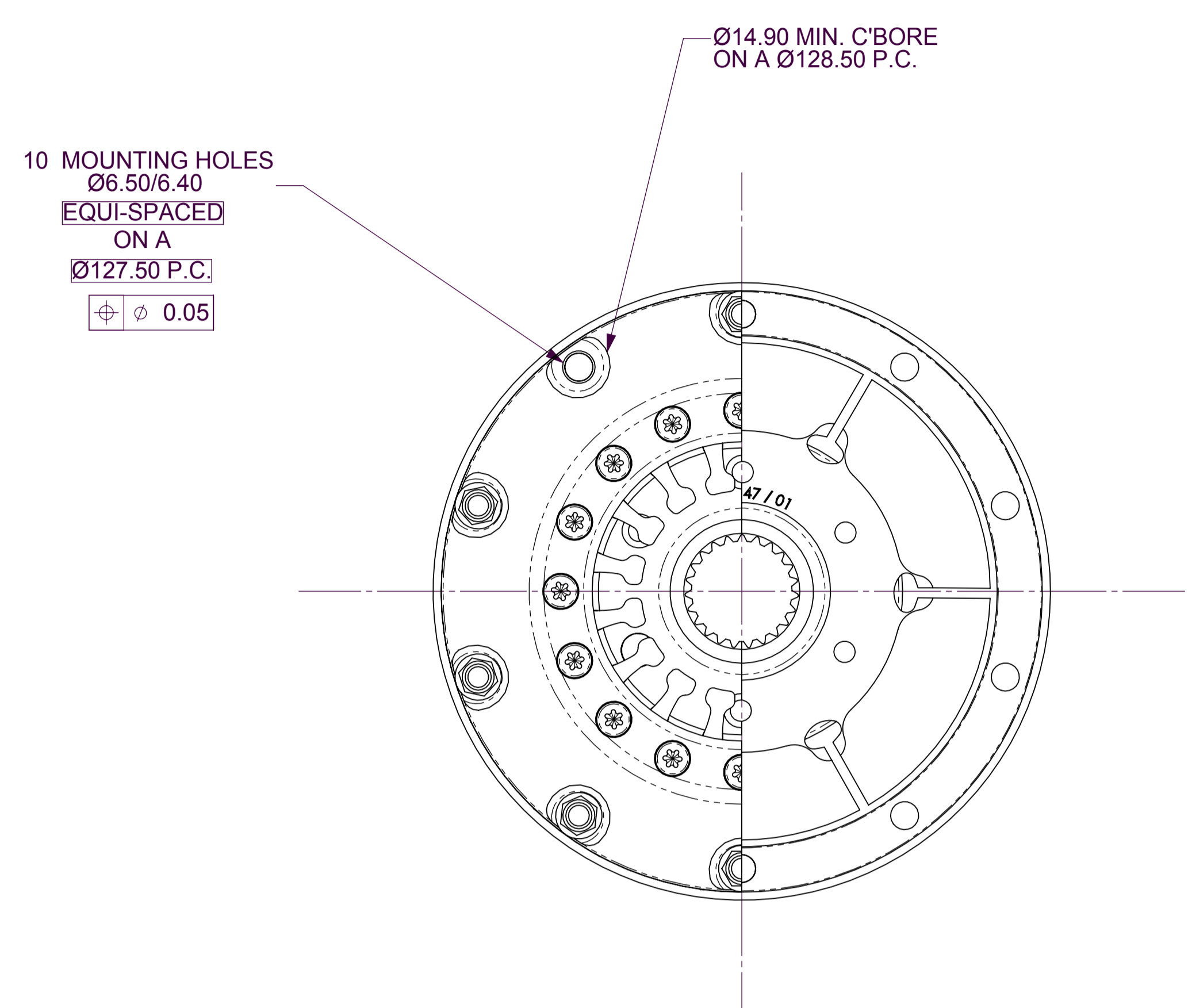
IF THIS DOCUMENT IS PRINTED IN HARD COPY, IT IS FOR INFORMATION USE ONLY AND THEREFORE IS NOT SUBJECT TO UPDATING CONTROLS. ALWAYS REFER TO SOLIDWORKS VIEWER FOR LATEST ISSUE



THIS DRAWING IS CONFIDENTIAL AND IS SUPPLIED ON THE EXPRESS CONDITION THAT IT SHALL NOT BE LOANED OR COPIED OR DISCLOSED TO ANY OTHER PERSON OR USED FOR ANY OTHER PURPOSE WITHOUT THE WRITTEN CONSENT OF AP RACING LTD.

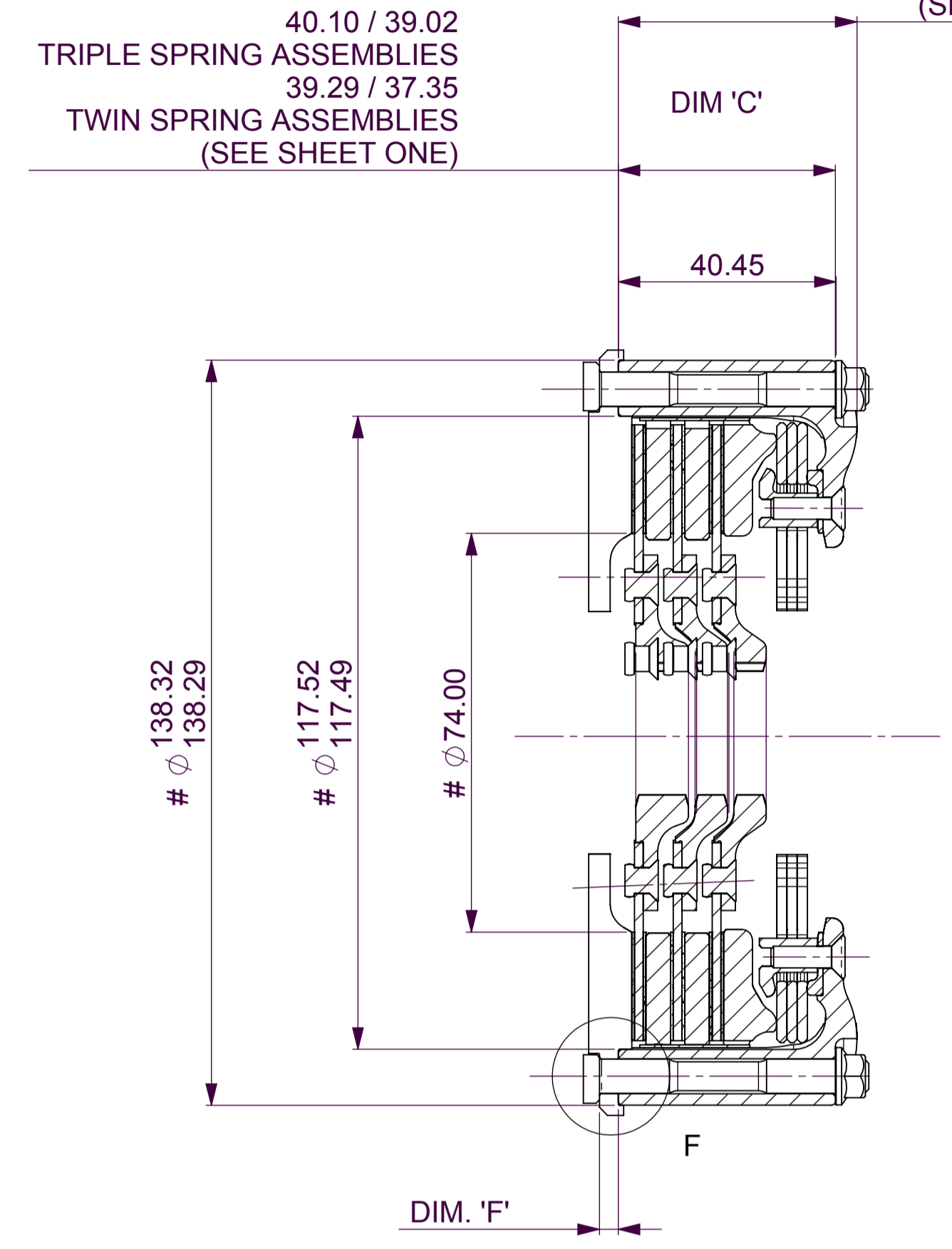


© AP Racing Ltd. 2004  
 AP Racing  
 Wheler Road  
 Coventry  
 CV3 4LB  
 Tel: +44 (0) 24 7663 9595  
 Fax: +44 (0) 24 7663 9559  
 e-mail: [engineering@apracing.co.uk](mailto:engineering@apracing.co.uk)  
 Web site: <http://www.apracing.com>



44.85 MAX. TRIPLE SPRING ASSEMBLIES  
 43.05 MAX. TWIN SPRING ASSEMBLIES (SEE SHEET ONE)

40.10 / 39.02 TRIPLE SPRING ASSEMBLIES  
 39.29 / 37.35 TWIN SPRING ASSEMBLIES (SEE SHEET ONE)

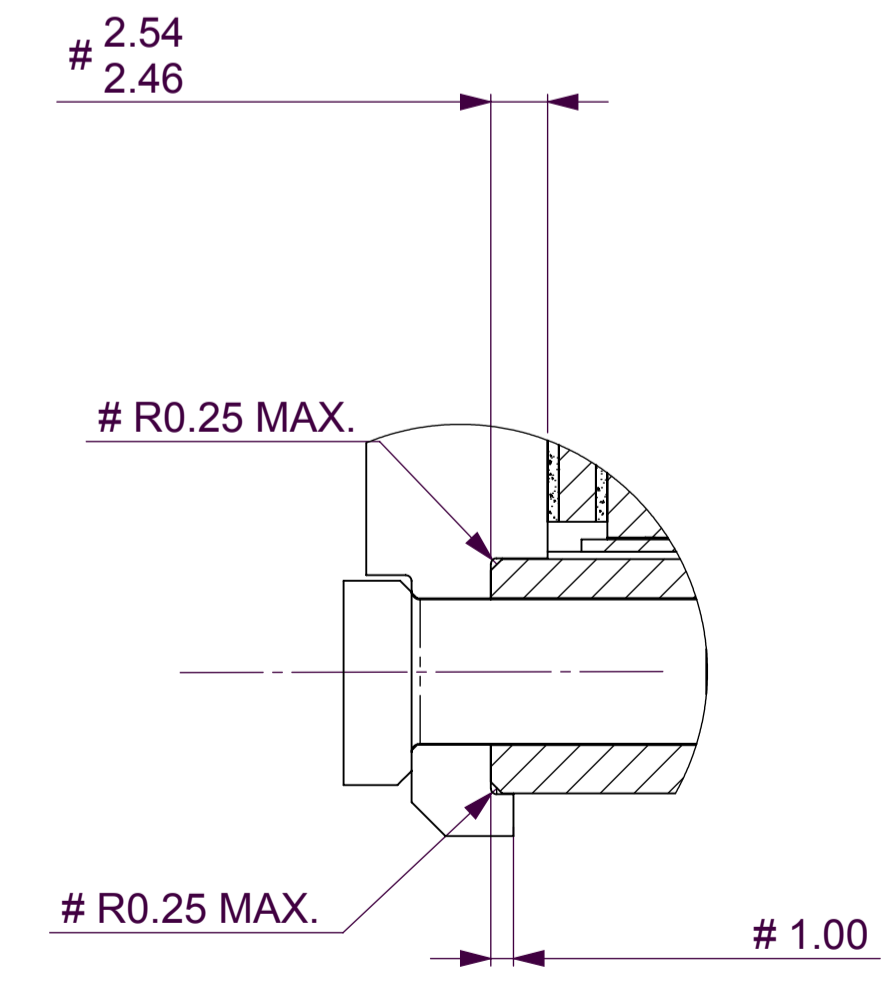
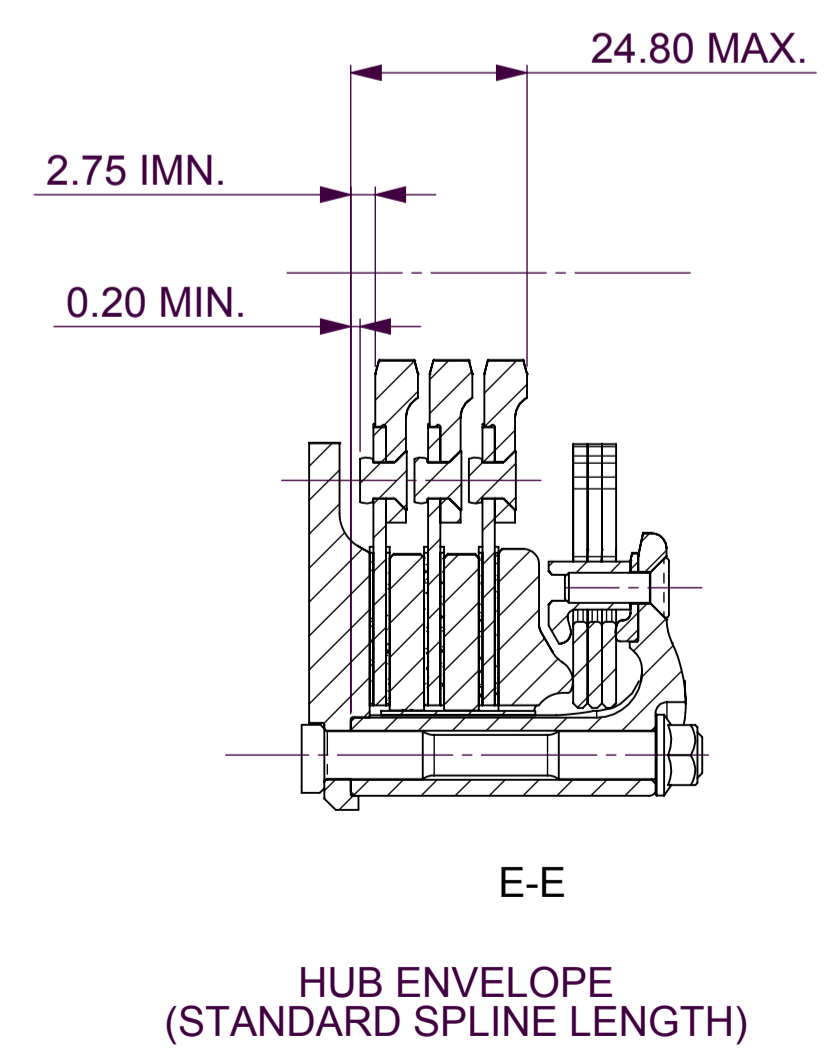
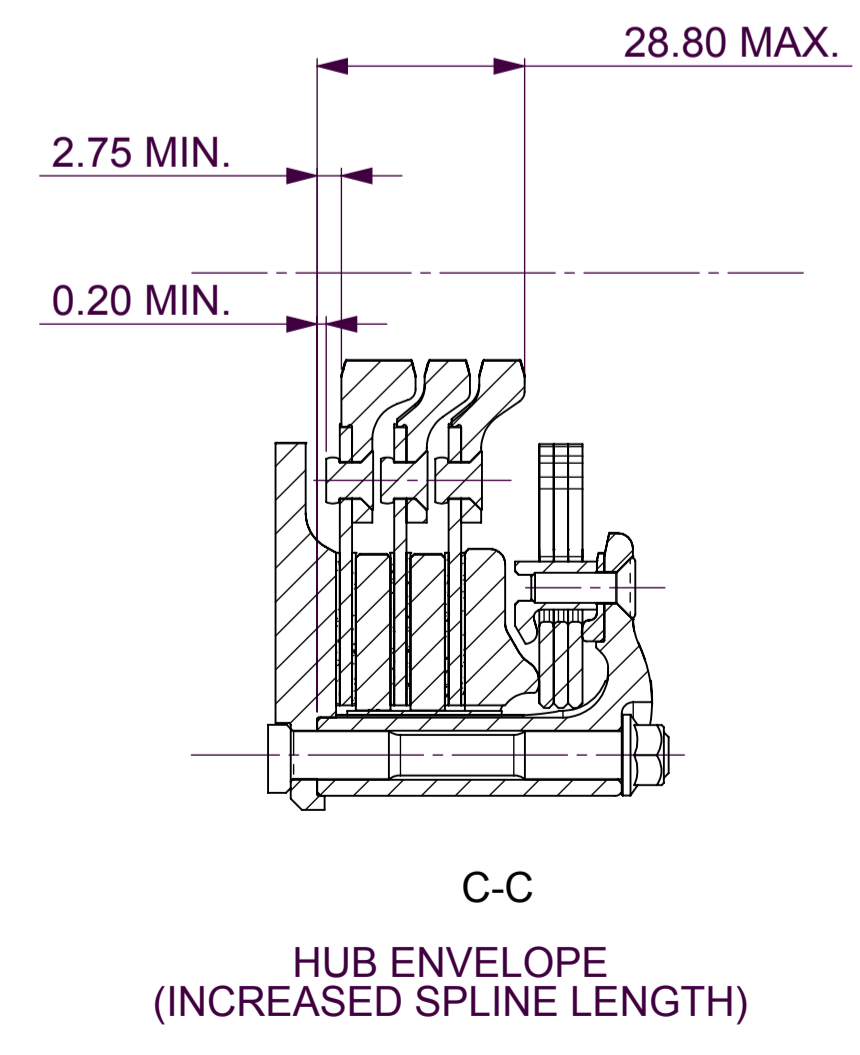


RECOMMENDED CLUTCH MOUNTING :  
 (FOR ALL TYPES OF ASSEMBLY)  
 1/4" UNF, CP4703 FAMILY STUD AND K-LOCK NUT.  
 TIGHTENING TORQUE : 10Nm (7,5 ft.lb)

LENGTH OF STUD REQUIRED TO BE CALCULATED THUS :

STUD LENGTH = DIMENSIONS 'C' + 'F' + NUT

THIS CALCULATED LENGTH TO BE ROUNDED UP TO THE NEXT AVAILABLE STANDARD STUD LENGTH.



NOTE: THE EXTERNAL SPIGOT IS OPTIONAL

DETAIL F SCALE 3 : 1

Issue No.	Alterations		Zone	Initials
	Date & No.	Particulars		
-	-	SEE SHEET 1 FOR ISSUE INFORMATION.	-	-

SCALE 1:1	SHEET 2 OF 2
DRAWN	Jeremy Govan
APPROVED	
DERIVED FROM	cp6073-1cd (medusa)
TITLE	4,5" (115mm) 3-PLATE SINTERED CLUTCH INSTALLATION DRAWING.
DRG NO.	cp6073cd